



CALIBRATION BATHS

(- 90 °C ...+ 130 °C)

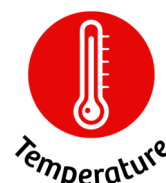
Model:

OB-22/2 ULT

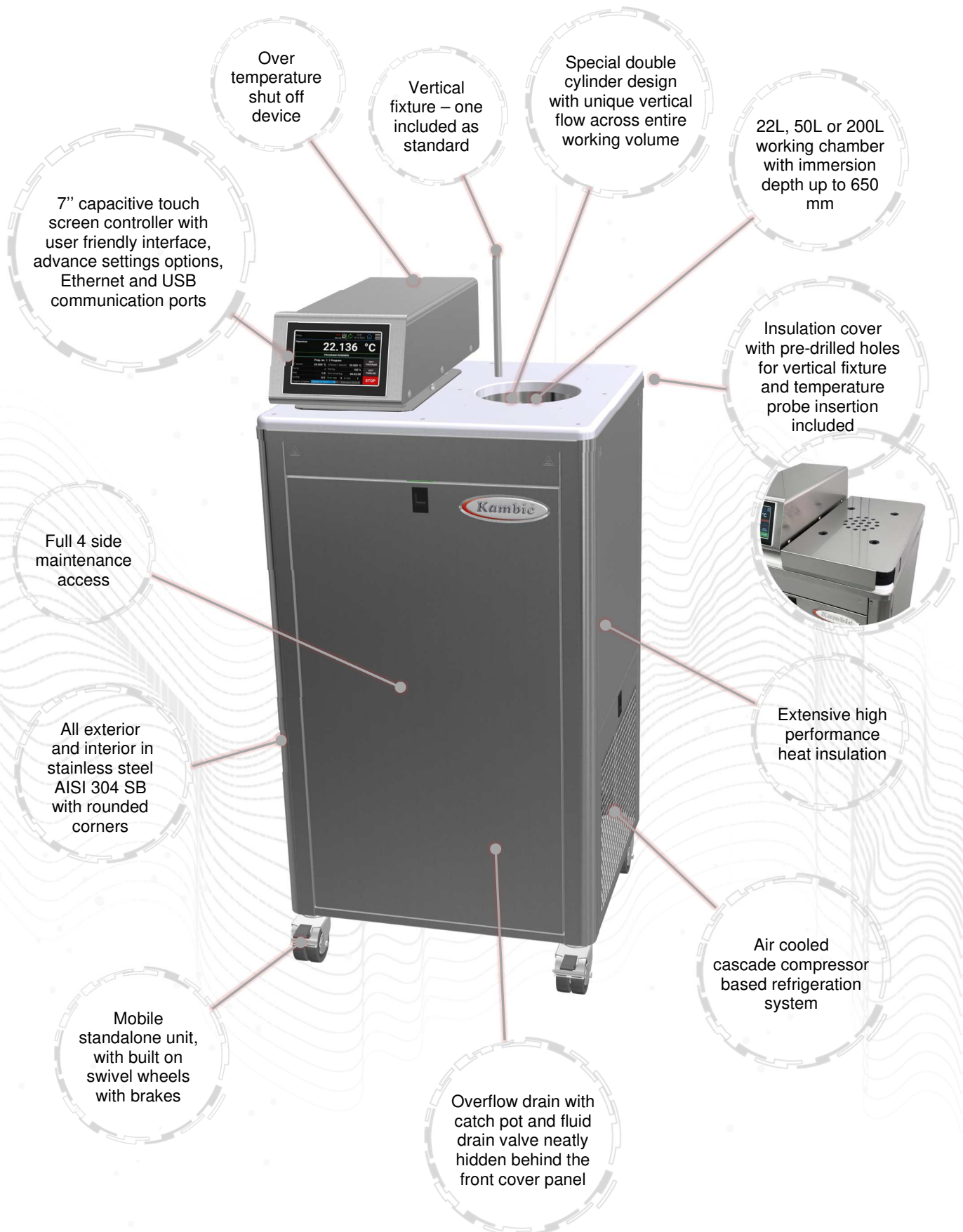
OB-50/2 ULT

OB-200/2 ULT

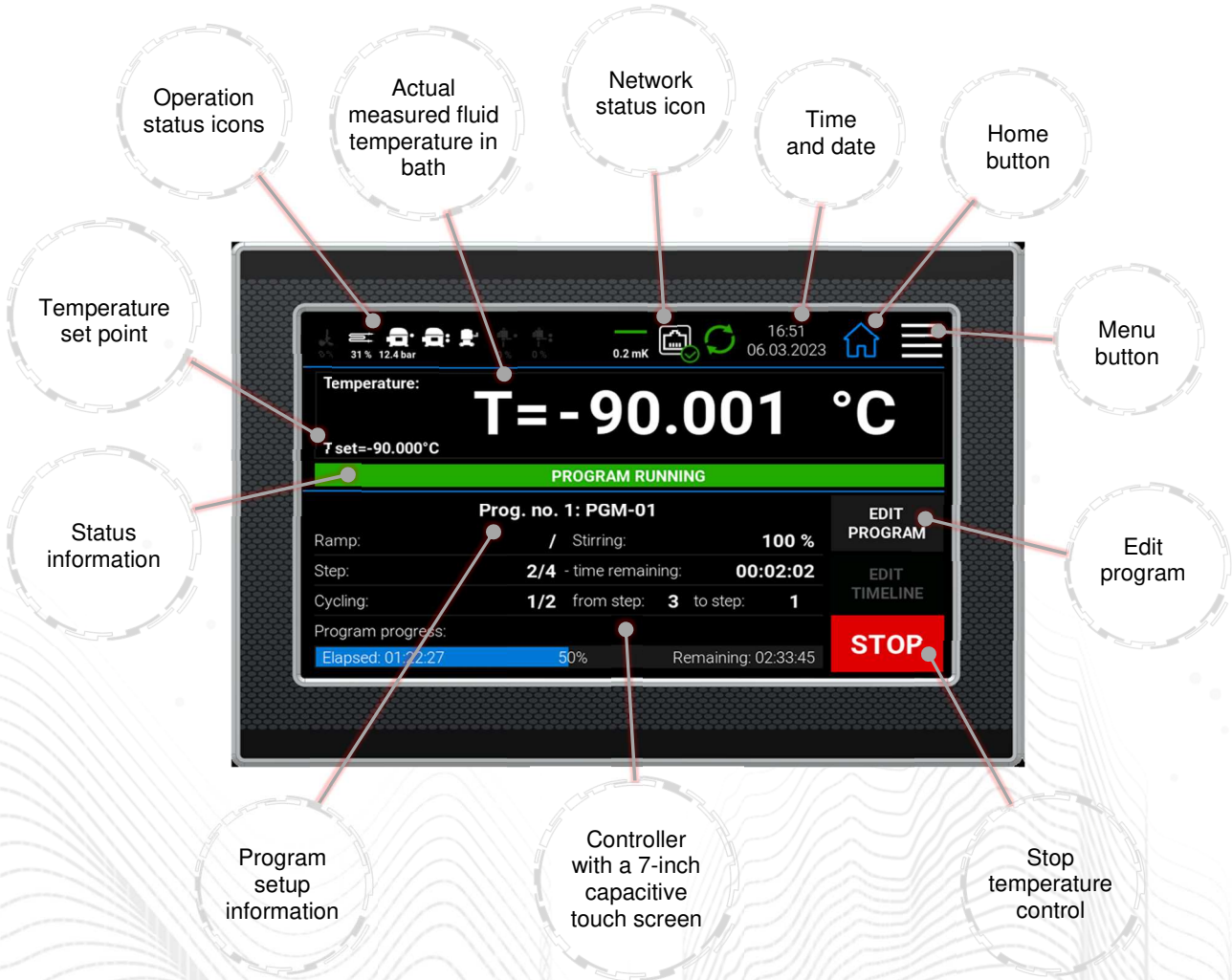
- Ultra-low temperature calibration baths - metrology performance
 - Uniformity and stability in mK range
 - Calibrate sensors of any dimension
 - Fluid ensures perfect heat transfer
 - Up to 650 mm immersion depth
 - Unique vertical flow design
 - State of the art solution
 - Three bath sizes



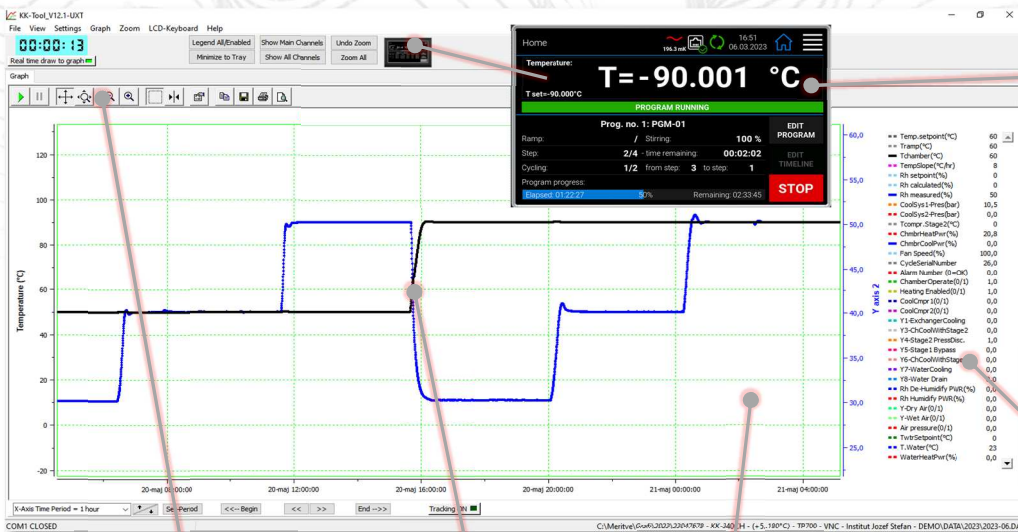
Device description:



Touch display with advanced controller functions:



OB-Tool software for PC (free – included with every unit):



Function keys for viewing manipulation of the graph



Real time data drawn to graph

Full process history overview

Virtual control panel - Complete remote control of the unit

Channels


Technical data:

	OB-22/2 ULT	OB-50/2 ULT
		
External dimensions (WxHxD) [mm]	604 x 1251 x 554	901 x 1275 x 691
Internal dimensions (diameter x immersion depth) [mm]	Ø 147 x 500	Ø 320 x 500
Volume [L]	~ 22	~ 50
Fluid quantity for operation [L]	25	65
Temperature range [°C]	- 90 ...+ 130	- 90 ...+ 130
Temperature display resolution [°C]	0.001	0.001
Temperature set resolution [°C]	0.001	0.001
Temperature stability [°C]	± 0.005 @ - 90 °C ± 0.005 @ + 20 °C ± 0.002 @ + 50 °C	± 0.003 @ - 90 °C ± 0.005 @ + 20 °C ± 0.002 @ + 50 °C
Temperature uniformity [°C]	± 0.007 @ - 90 °C	± 0.007 @ - 90 °C
Heating rate	~ 1 hour (- 90 °C ...+ 20 °C)	~ 3 hours (- 90 °C ...+ 20 °C)
Cooling rate	~ 4 hours (+ 20 °C ...- 90°C)	~ 14 hours (+ 20 °C ...- 90 °C)
Temperature Control	PID	PID
Noise level [dBA]	< 58	< 58
Cooling	Cascade compressor refrigeration system	Cascade compressor refrigeration system
Power supply	230 V 50/60 HZ (± 10 %)	230 V 50/60 HZ (± 10 %)
Wattage [W]	3600	3600
Interface	Ethernet, USB	Ethernet, USB
Weight [kg]	~ 135	~ 175

**All performance data with fluid KDC ULT*

**All performance in controlled environment ($T_{ambient} = 22 \text{ °C} \pm 3 \text{ °C}$)!*

**Accessories might affect performance!*

	OB-200/2 ULT
	
External dimensions (WxHxD) [mm]	1264 x 1496 x 994
Internal dimensions (diameter x immersion depth) [mm]	Ø 600 x 650
Volume [L]	~ 200
Fluid quantity for operation [L]	260
Temperature range [°C]	- 90 ...+ 130
Temperature display resolution [°C]	0.001
Temperature set resolution [°C]	0.001
Temperature stability [°C]	± 0.005 @ - 90 °C ± 0.005 @ + 20 °C ± 0.002 @ + 50 °C
Temperature uniformity [°C]	< ± 0.007 @ - 90 °C
Heating rate	~ 4 hours (- 90 °C ...+ 20 °C)
Cooling rate	~ 20 hours (+ 20 °C ...- 90 °C)
Temperature Control	PID
Noise level [dBA]	< 70 dBA
Cooling	Cascade compressor refrigeration system
Power supply	3x400 V 50/60 HZ (± 10 %)
Wattage [W]	11800
Interface	Ethernet, USB
Weight [kg]	~ 500

**All performance data with fluid KDC ULT*

**All performance in controlled environment ($T_{ambient} = 22 \text{ °C} \pm 3 \text{ °C}$)!*

**Accessories might affect performance!*

Accessories:

- LIG thermometer holder



- Vertical fixture



- Adjustable multiple probe fixture



- External fluid level for LIG



- Additional lid



- Removable shelf



- Fume hood



- Evaluation report



Ordering information and accessories:

Description	Part no.
Calibration bath OB-22/2 ULT	1626
Calibration bath OB-50/2 ULT	1633
Calibration bath OB-200/2 ULT	2951
Evaluation report – performed by Kambič	1719
Evaluation report (accredited ISO/IEC 17025:2017)	2997
External fluid level for LIG	1655
Vertical fixture	1657
Adjustable multiple probe fixture	1733
LIG (liquid in glass thermometer) fixture	1735
Local fume hood with fan	1656
Removable shelf	1658
Extra lid for OB-22/2 ULT	1636
Extra lid for OB-50/2 ULT	2115
Extra lid for OB-200/2 ULT	812
Silicone oil fluid KDC ULT (- 100 °C ...+ 30 °C)	700

**Accessories might affect performance!*

